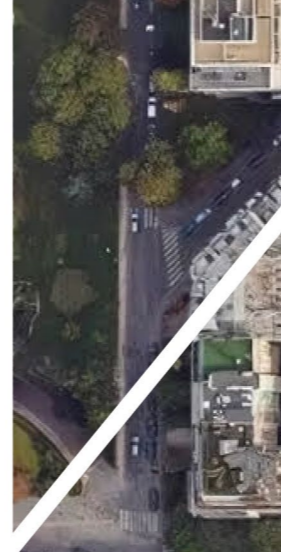
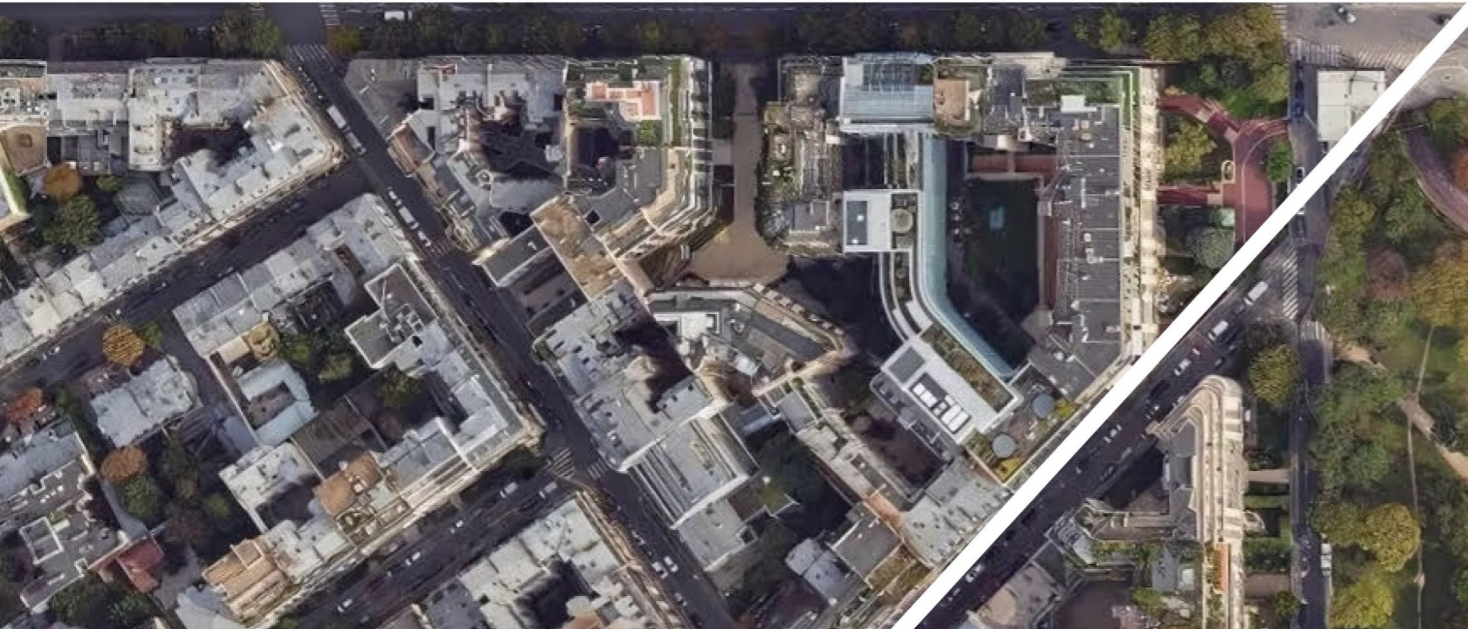
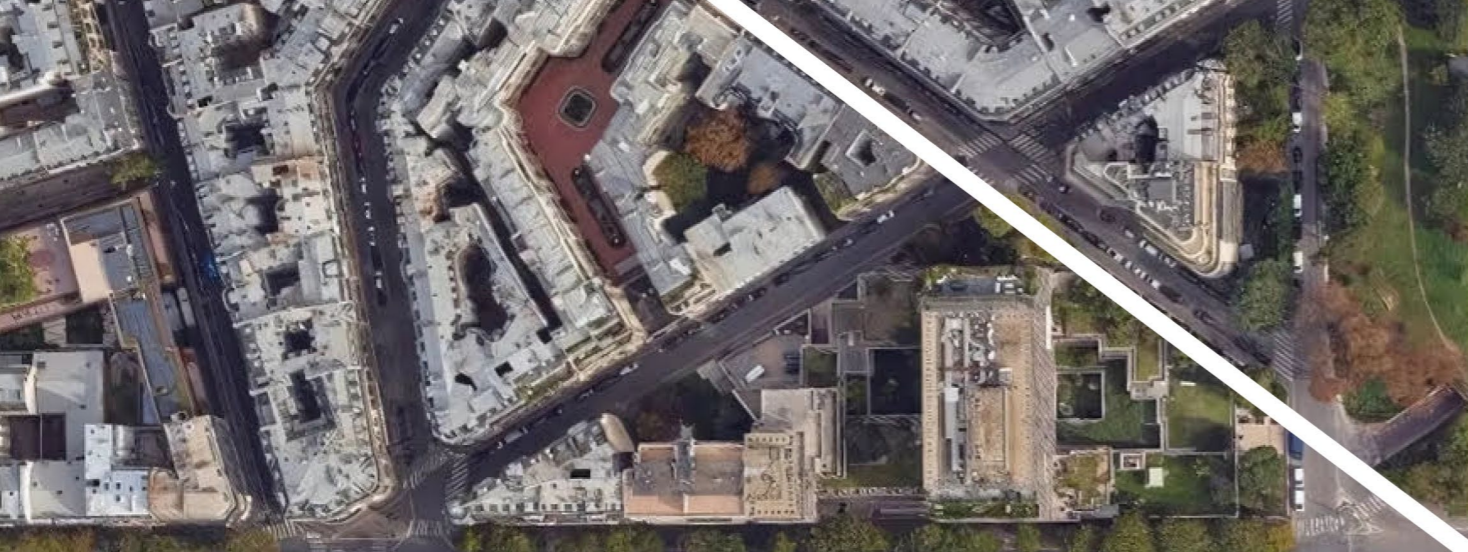


PARIS

L'ARSENAL
DE FOCH





A historical site put to new use

Developing an urban logistics site in an underground parking lot is an innovative way to meet the needs of the city and its residents while favoring land sobriety.

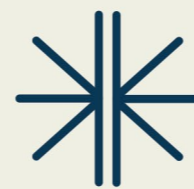
No new construction or additional artificialised land: available space is transformed into a storage and distribution center which also serves other essential urban functions.

One of the key entry points to Paris

Avenue Foch, a prestigious artery of Paris, has witnessed history unfolding here since the 19th century.

Renowned for its elegance and luxurious residences, it continues to evolve today.

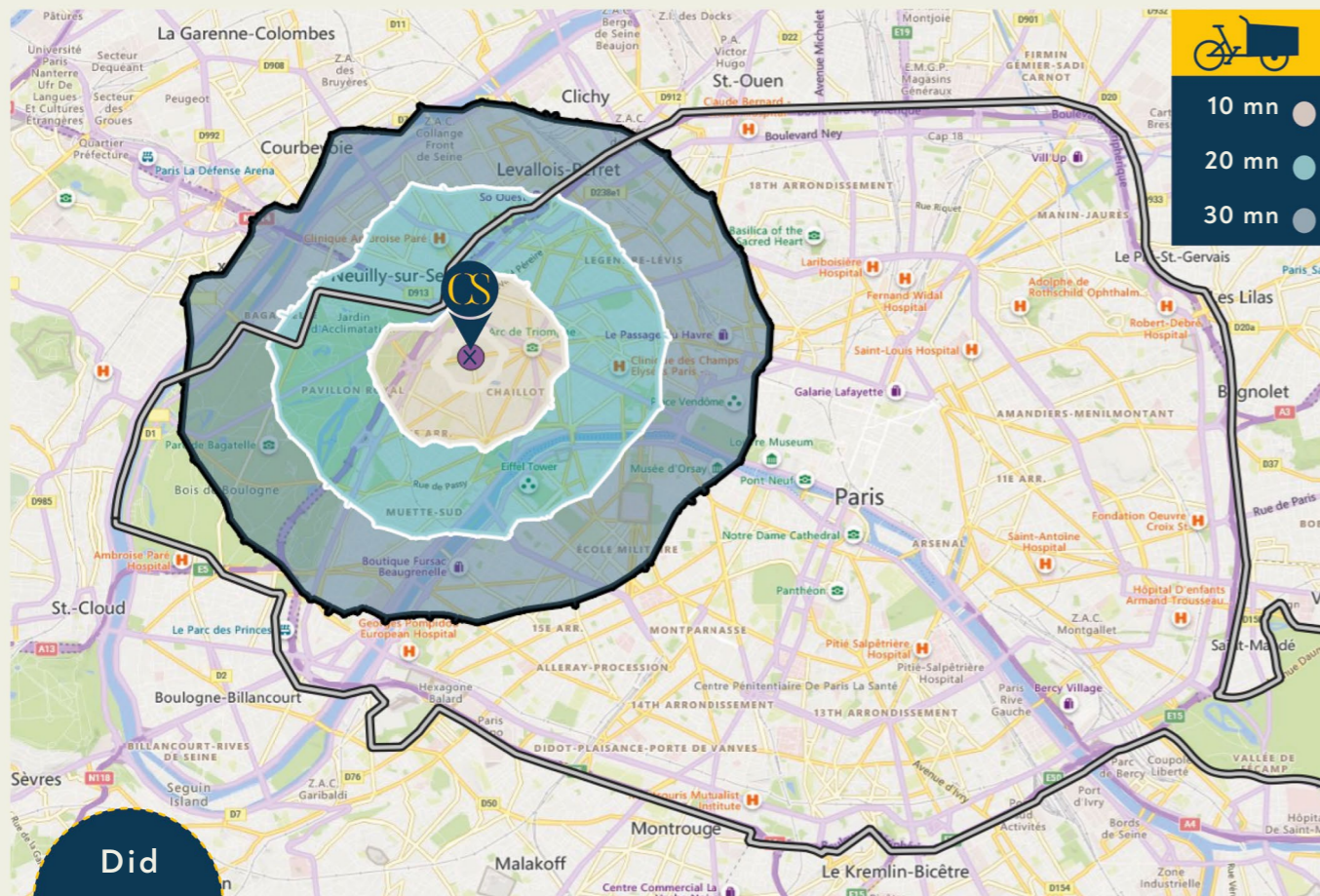
Stretching from the Arc de Triomphe to the bois de Boulogne, it remains one of Paris's major through roads, offering a strategic location.



A Pillar of Urban Mobility

Located at the heart of urban activity, the avenue's historic star-shaped layout was designed to ensure a smooth and efficient flow of traffic across the entire city.

Located in the heart of Paris, the 16th district



Did you know?

In 2024, Avenue Foch replaced the Champs-Élysées for the July 14th military parade, marking a historic first in French national tradition.

Avenue FOCH:
a point of convergence

Direct access:

- Place de l'Étoile
- Porte Dauphine
- Porte Maillot

8km from la Défense
4km from the bois de Boulogne

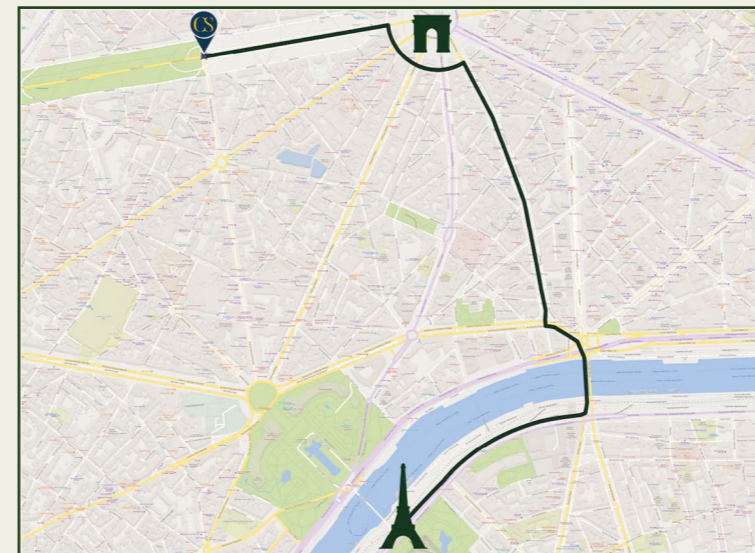
3km from the A14
3km from the A86



5 underground stations within 5 minutes walking distance

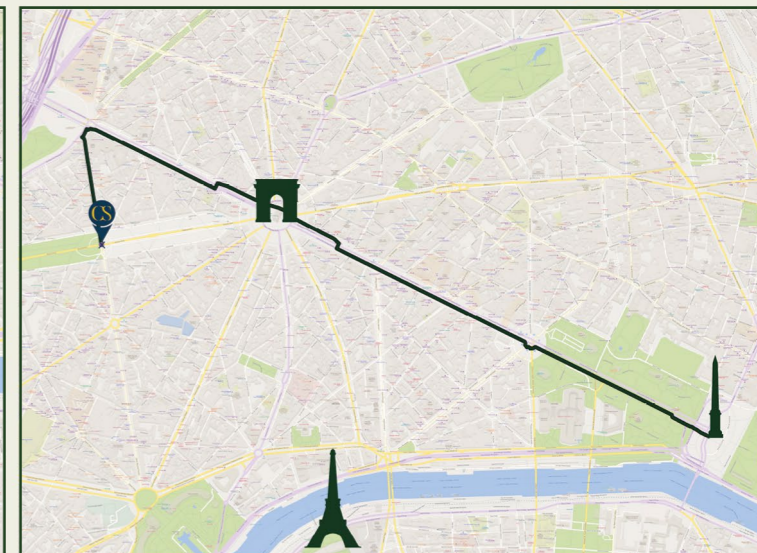


Eiffel tower: 12 mn



The quayside and the left bank accessible via bike lanes in just 12 minutes.

Place de la Concorde : 13 mn



The centre of Paris: direct access in under 15 minutes.

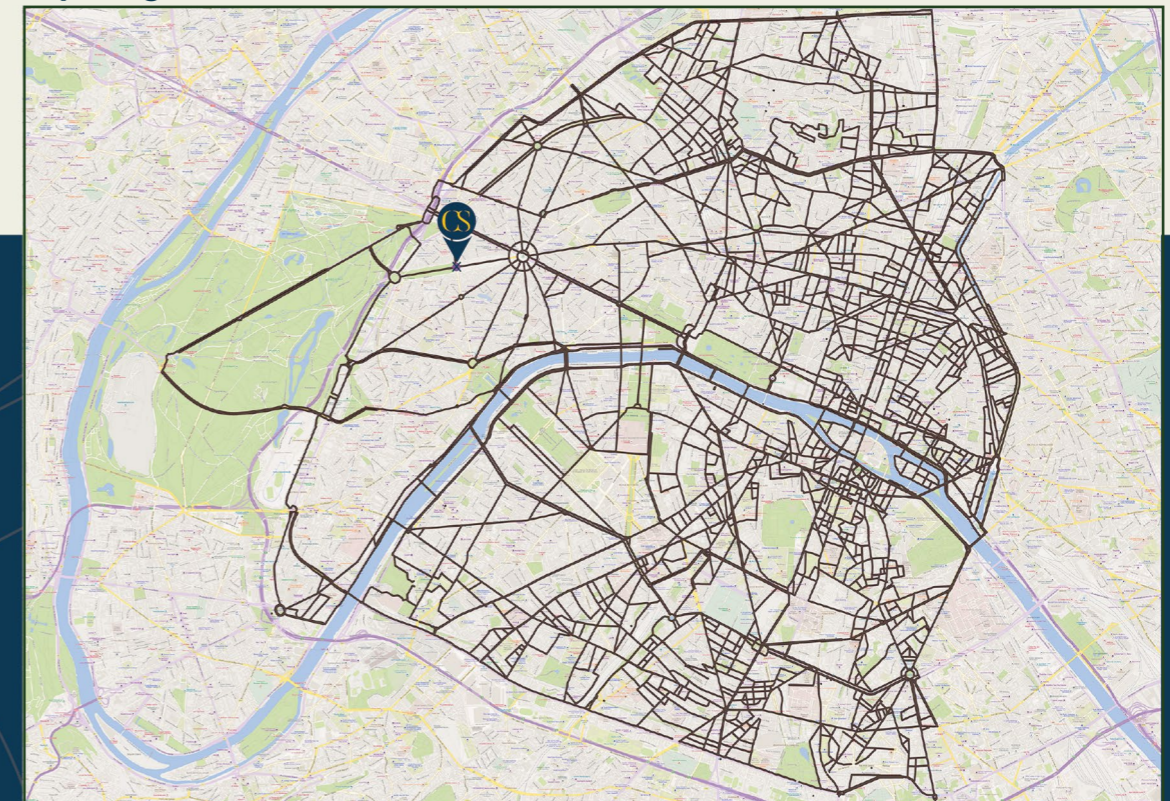
More than 160km of bike lanes...

... for safe access to all of Paris

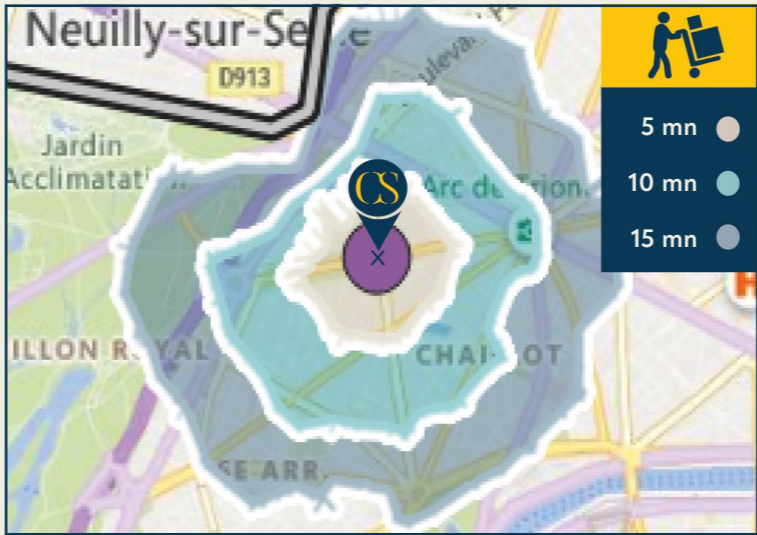
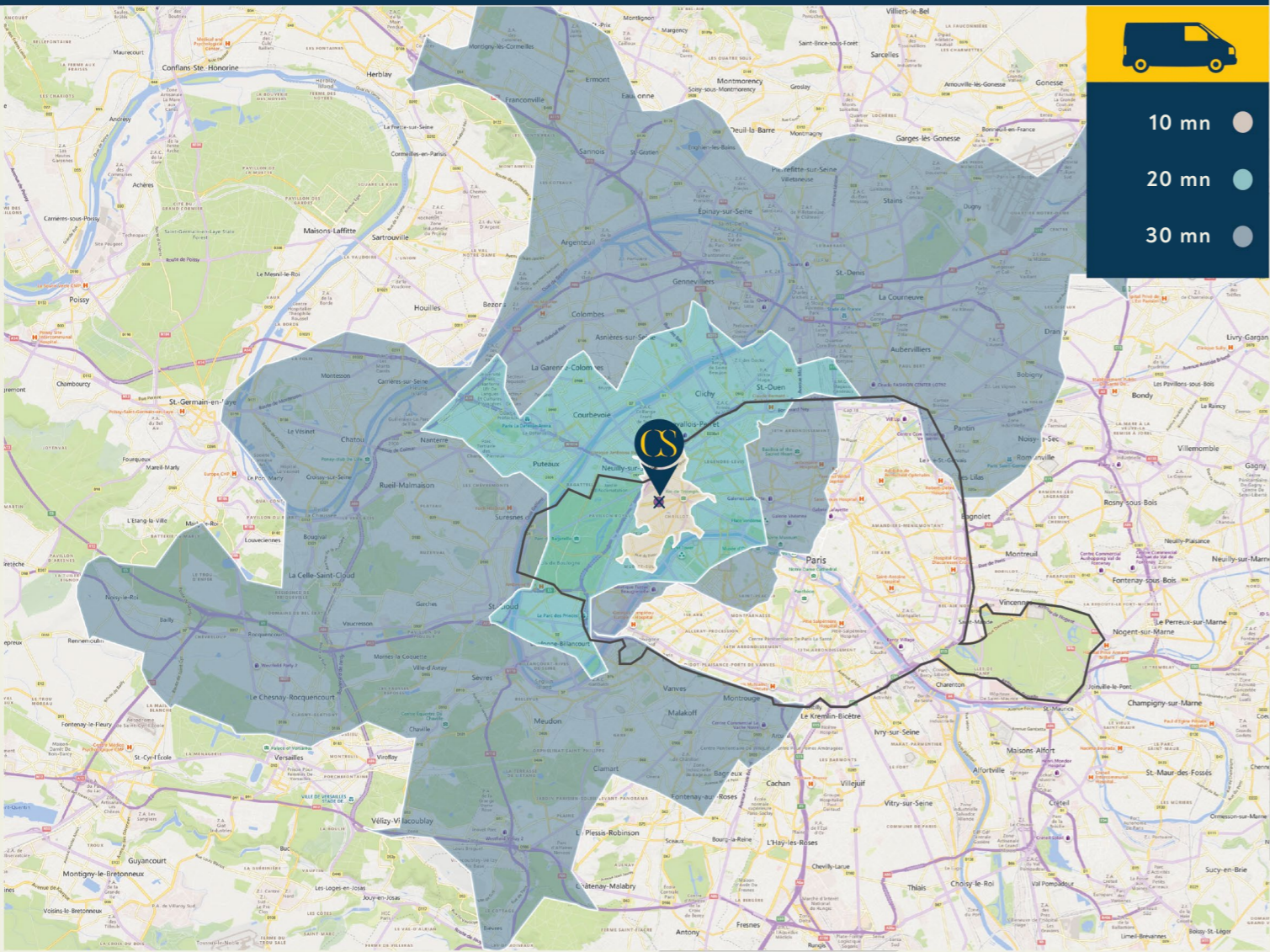
At the heart of a dense cycling network, it is an ideal starting point for cargo bike distribution.

Speed, efficiency, and environmental responsibility...

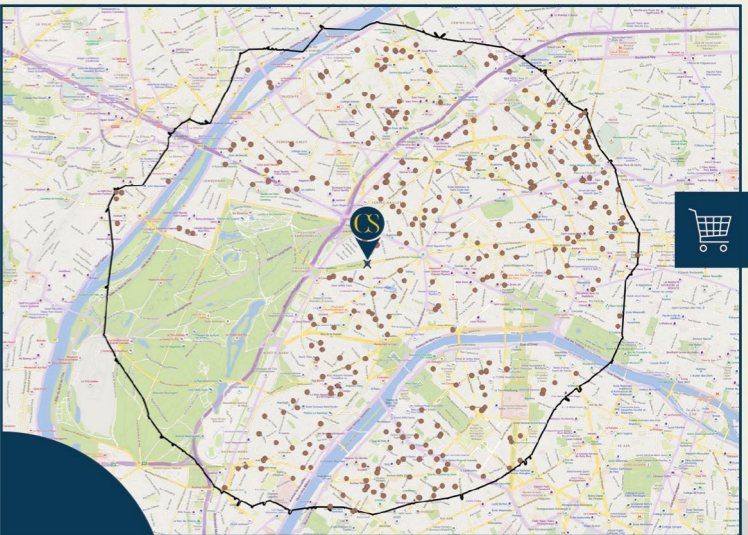
Cycling network



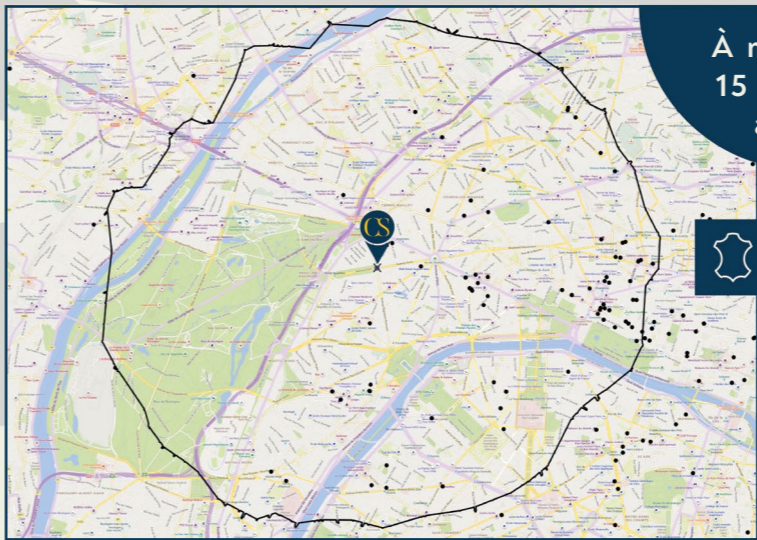
An ideal centre of gravity for deliveries in Ile-de-France



+90 000 people

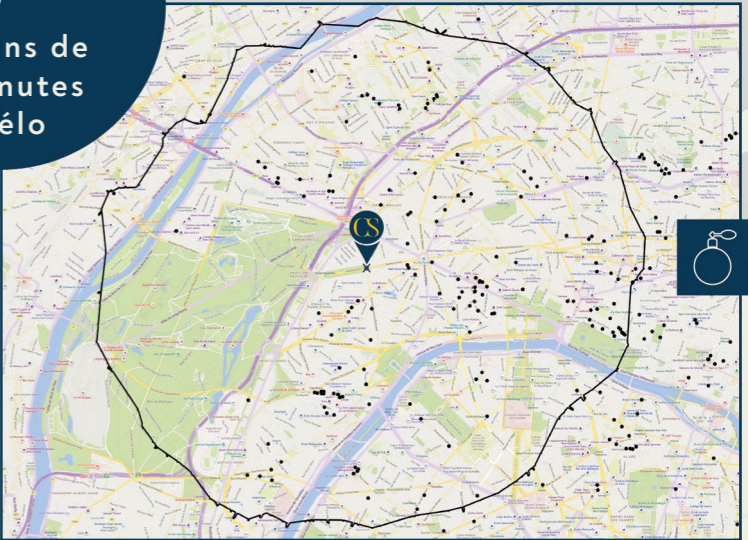


+300 supermarkets



À moins de 15 minutes à vélo

+80 leather goods stores



+150 perfume stores

+ de 44 000 inhabitants within a 10 minute walk

+ de 1 000 restaurants within 10 minutes by bike

+ de 600 luxury shops within 15 minutes by bike

+ de 200 hotels within 15 minutes by bike

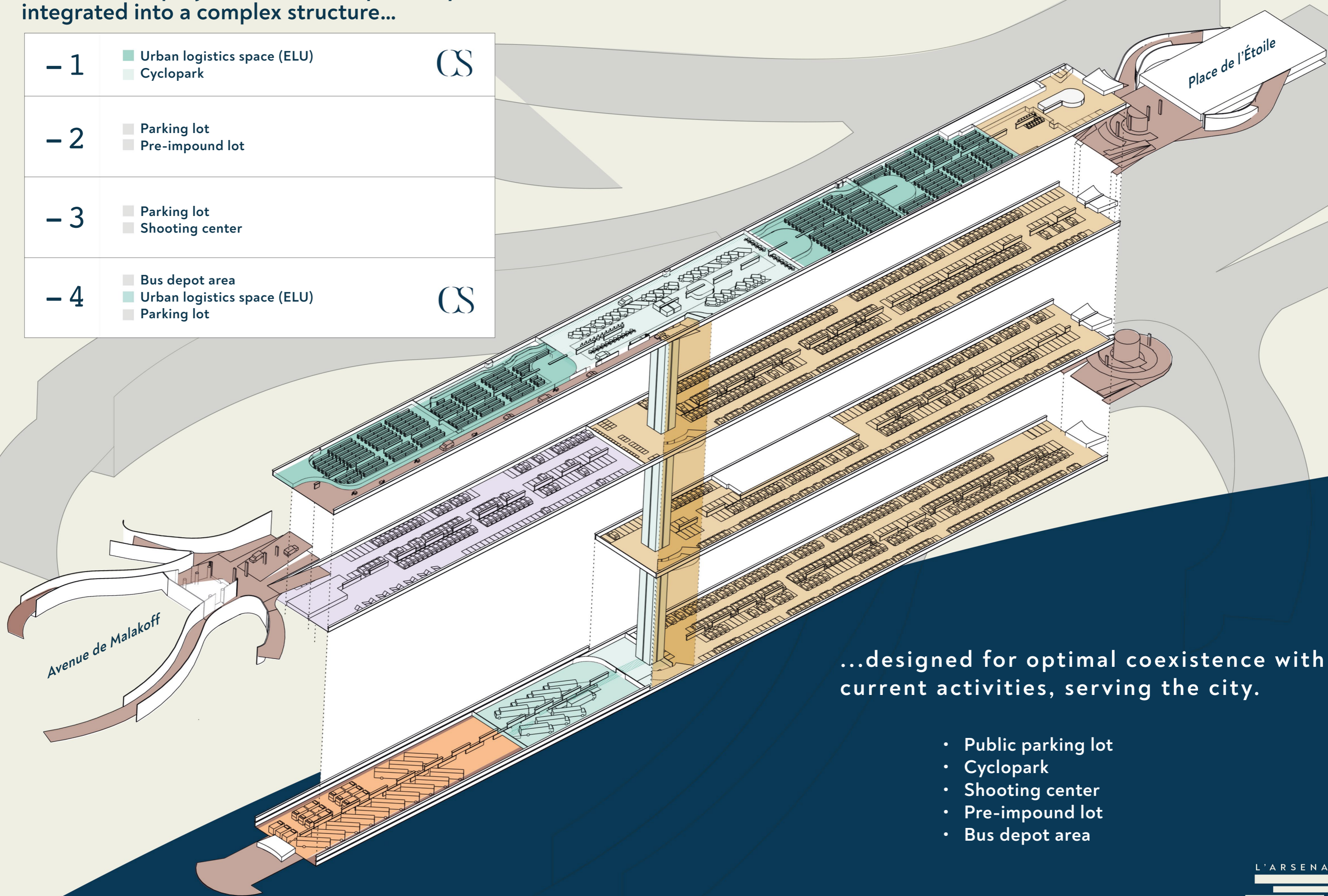
Did you know?

An Avenue with a Thousand Names

Initially called Avenue de l'Impératrice, then Avenue du Général-Uhrich, and later Avenue du Bois-de-Boulogne, this iconic road became Avenue Foch in 1929. Its prestigious history and illustrious residents have sometimes earned it the unofficial nickname "Avenue of Secrets."

An ambitious project of 12,000m² perfectly integrated into a complex structure...

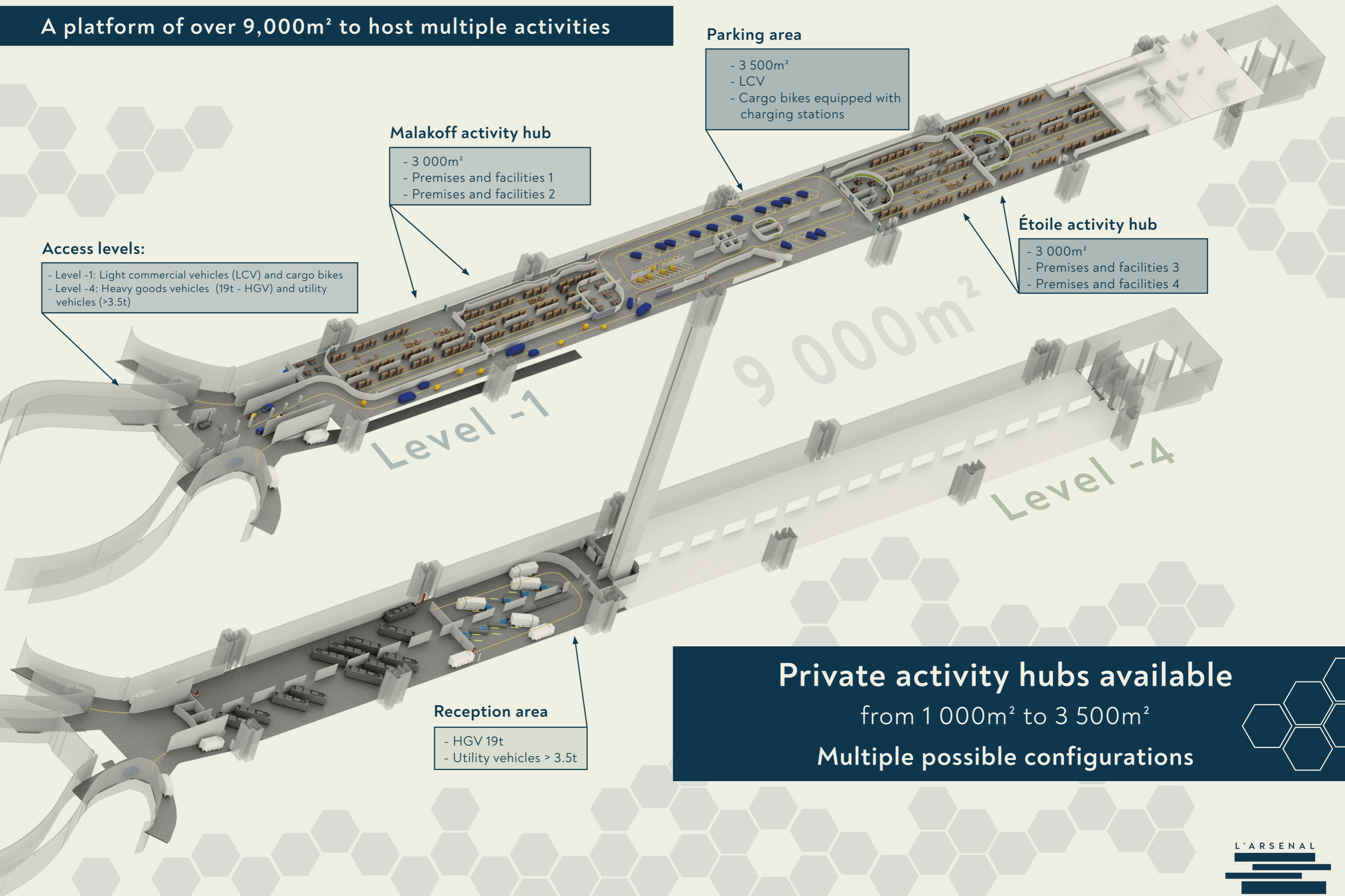
- 1	<div><div></div> Urban logistics space (ELU)</div> <div><div></div> Cyclopark</div>	CS
- 2	<div><div></div> Parking lot</div> <div><div></div> Pre-impound lot</div>	
- 3	<div><div></div> Parking lot</div> <div><div></div> Shooting center</div>	
- 4	<div><div></div> Bus depot area</div> <div><div></div> Urban logistics space (ELU)</div> <div><div></div> Parking lot</div>	CS



...designed for optimal coexistence with current activities, serving the city.

- Public parking lot
- Cyclopark
- Shooting center
- Pre-impound lot
- Bus depot area

A platform of over 9,000m² to host multiple activities



Access levels:

- Level -1: Light commercial vehicles (LCV) and cargo bikes
- Level -4: Heavy goods vehicles (19t - HGV) and utility vehicles (>3.5t)

Malakoff activity hub

- 3 000m²
- Premises and facilities 1
- Premises and facilities 2

Parking area

- 3 500m²
- LCV
- Cargo bikes equipped with charging stations

Étoile activity hub

- 3 000m²
- Premises and facilities 3
- Premises and facilities 4

Reception area

- HGV 19t
- Utility vehicles > 3.5t

Private activity hubs available
from 1 000m² to 3 500m²
Multiple possible configurations

24/7 access unmatched in the western part of Paris,
for large-sized vehicles.

A shared platform with access ramps:

- Activity hubs **Level -1**
- Reception area **Level -4**



2 000m² dedicated to LGV unloading



Connected to activity hubs **via 4 industrial freight elevators**



Access
19t



100%
secure



Paris
8th / 16th



Fully
renovated



Clear height



4,40m

Industrial freight elevators

x4



2t load capacity each

7 loading docks for vehicles
from 3.5t to 19t

Complete transformation into a fully outfitted logistics base, with no disruption to the city or its residents.

Freight elevators connected to the HGV reception area




Access
19t


100%
secure


Paris
8th / 16th


Fully
renovated




Dispatch area for LVC and cargo bikes



6 000m² dedicated to activity, storage and staff premises
- can be divided into 4 units

14 28 parking spaces,
equipped with charging terminals for electric vehicles



Clear height	Charging stations	Slab load capacity
 2,05m	 14	 250kg / m ²



CORSALIS is a real estate company dedicated to urban logistics, developing spaces in France and Italy for urban distribution and last-mile logistics players.

These urban facilities help reduce the carbon impact of deliveries — both for end customers and retailers — while easing traffic congestion in the area of operation.

After Le Pressoir de Bercy, L'Arsenal de Foch is the second project completed in partnership with the Indigo Group.

www.corsalis.com

[Linkedin.com/company/corsalis/](https://www.linkedin.com/company/corsalis/)

corsalis
16, rue Dumont d'Urville
75116 Paris

info@corsalis.com
+33 1 45 64 49 36



A world leader in parking and individual mobility, INDIGO is a French group employing 10,200 peoples in 10 countries and nearly 580 cities.

INDIGO is the only international operator to offer all types of parking facilities: multi-storey car parks, shared private car parks and on-street management.

The group operates 2,700 car parks worldwide (1.7 million spaces) and manages 3,200 km of on-street parking.

In France, 190 towns and cities rely on the expertise and know-how of the INDIGO group's engineers and operators.

www.group-indigo.com

[Twitter.com/groupindigo](https://twitter.com/groupindigo)
[Linkedin.com/company/park-indigo-group](https://www.linkedin.com/company/park-indigo-group)

QR code

