

CS
corsalis

INDIGO

PARIS

LE PRESOIR
DE BERCY



LE PRESOIR
DE BERCY

IN PARIS, AN URBAN LOGISTICS SPACE

IN THE CENTER OF THE BERCY DISTRICT

IN THE HEART OF PARIS

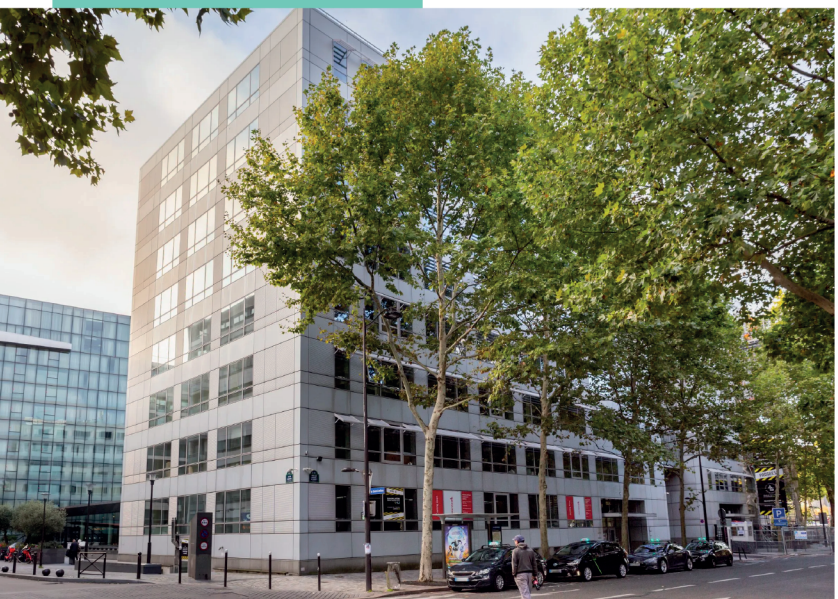
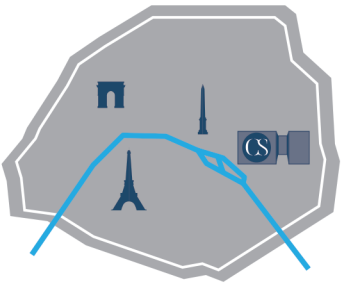
- 3 km from Place de la Nation
- 100 m from Quai de Bercy

DIRECT ACCESS TO THE RING ROAD

- 5 km from Porte de Vincennes
- 7 km from Porte de Bagnole
- 12 km from Rungis Market

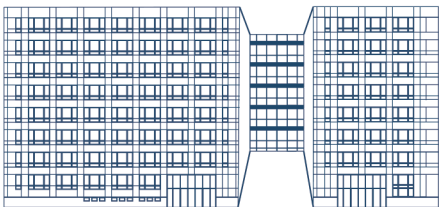
NEAR MAJOR HIGHWAYS

- 900 m from l'A4
- 6 km from l'A86
- 4 km from l'A6



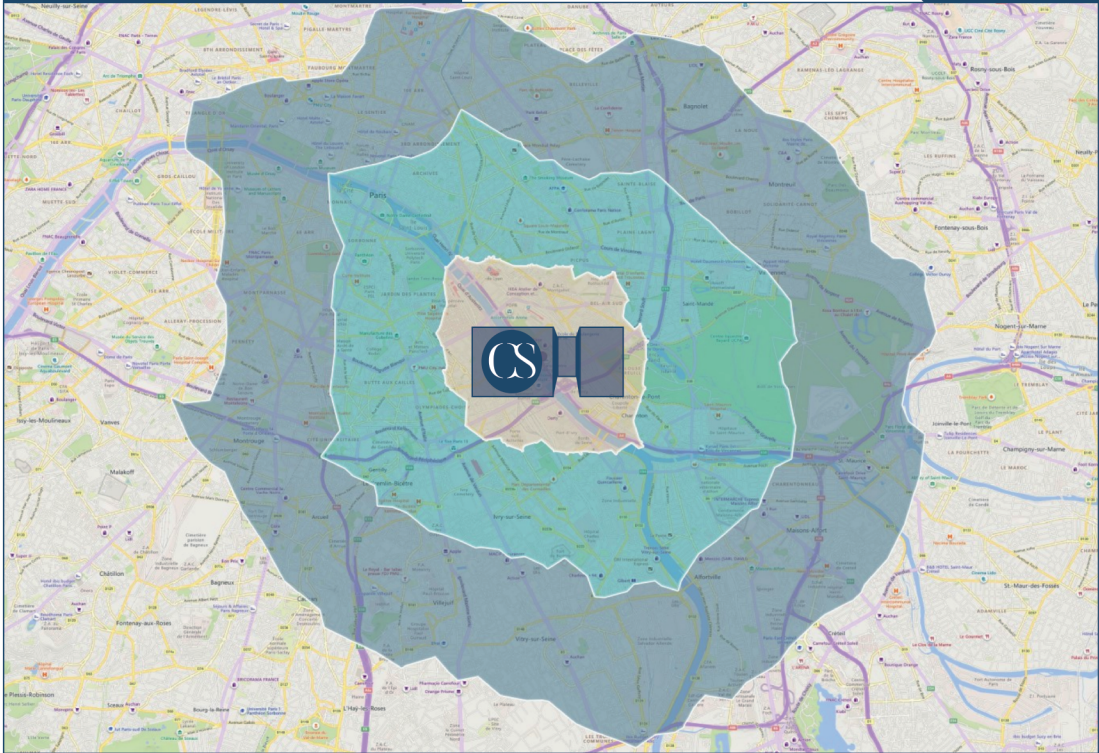
m² 1 430 sqm
M Cour St Émilien

ACCESSIBILITÉ DU SITE



In the heart of Paris, in the east of the city, Corsalis has renovated and transformed a space with high ceilings, accessible to heavy goods vehicles.

CARGO BIKE ISOCHRON



10mn
20mn
30mn

JOURNEY TIME
By cargo bike &
utility vehicle

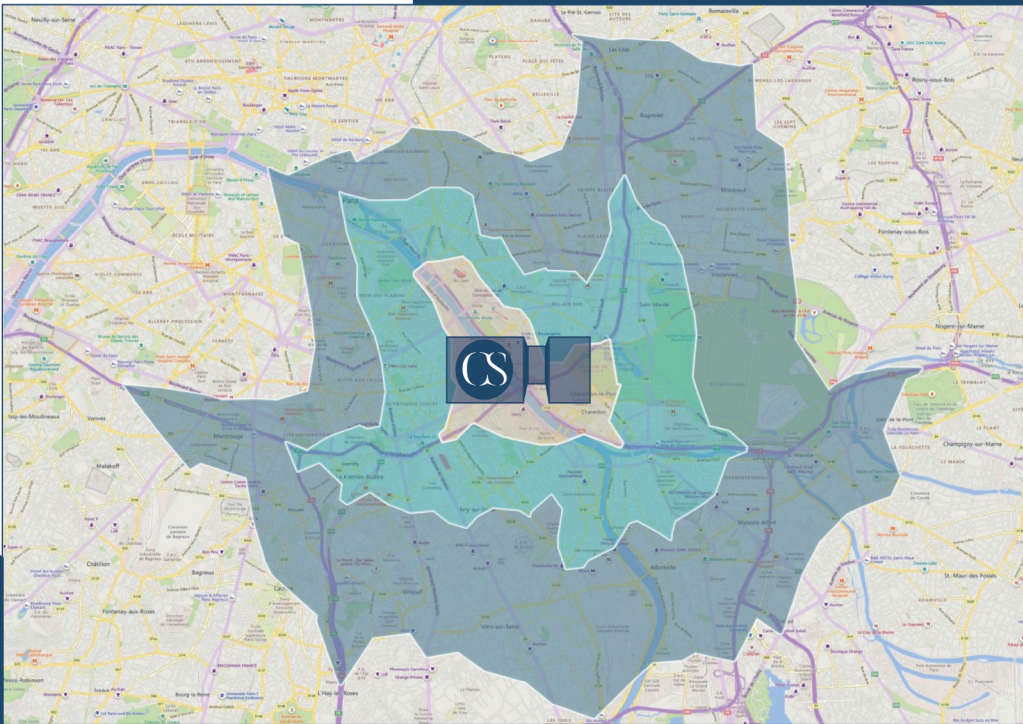
10mn
20mn
30mn

More than **5,500 selling points** are only 20 minutes away by utility vehicle.

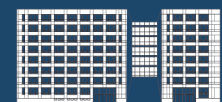
Nearly **1.5 millions people** live less than 20 minutes away by bike.



UTILITY VEHICLE ISOCHRON



10mn
20mn
30mn



1 400 sqm OF MODULAR SURFACE AREA

ACCESSIBLE TO ALL KINDS OF VEHICLES

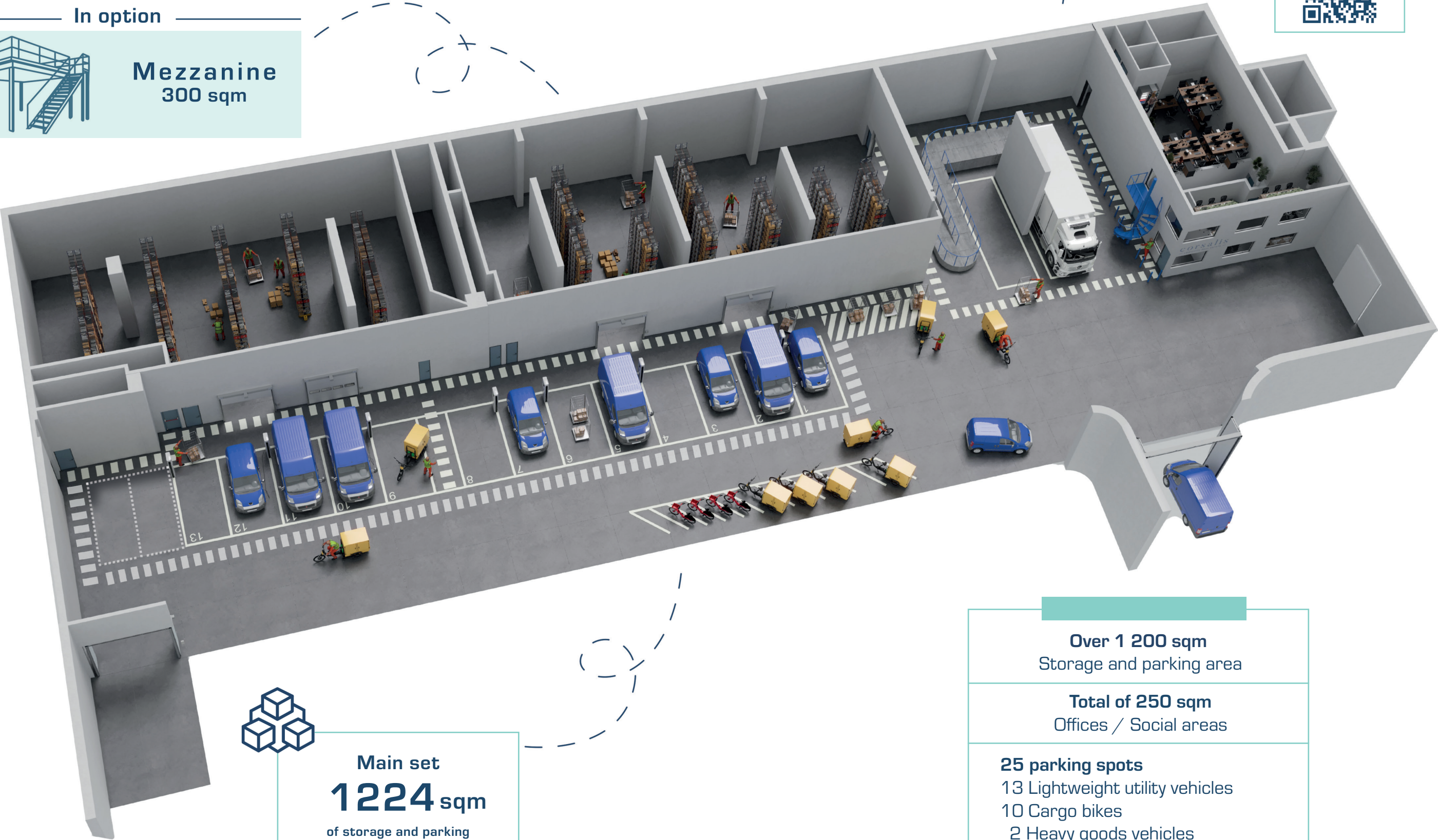
Heavy goods vehicles, lightweight utility vehicles, cargo bikes

In option



Mezzanine
300 sqm

FOR A VIRTUAL
TOUR, SCAN
THIS QR CODE



Main set
1224 sqm
of storage and parking

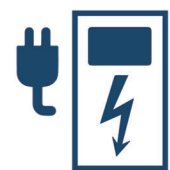
Over 1 200 sqm
Storage and parking area

Total of 250 sqm
Offices / Social areas

25 parking spots
13 Lightweight utility vehicles
10 Cargo bikes
2 Heavy goods vehicles



A FACILITY WITH SPACE FOR STORAGE, ACTIVITY
AND DELIVERY



Entry template at: **4,40 m**

Free height below the slab up to: **6 m**

Charging points: **13**

Slab resistance: **2 t** per sqm

Onloading indoor area with 2 docks



Parking area for LUV and cargo bikes





CORSALIS is a real estate firm dedicated to urban logistics, which develops spaces aimed at stakeholders involved in urban distribution and last mile logistics in France and Italy.

These urban facilities lower the carbon impact of deliveries - for end clients and retailers - while also reducing traffic in the area in question.

In 2022, Altarea Group, leader in urban transformation in France, acquired a stake in Corsalis.



INDIGO is an international leader in parking and personal mobility. This French group employs 9,500 people in 9 countries and 500 cities. INDIGO is the only international operator to offer all kinds of parking: multi-storey car parks, private shared parking and on-street parking.

The group manages 2,600 parking facilities (1.4 million parking spots) and over 2,100 km of paid street parking, all around the world.

In France, more than 195 cities place their trust in the expertise and know-how of the INDIGO group's engineers and operators.

www.group-indigo.com

[Twitter.com/groupindigo](https://twitter.com/groupindigo)

linkedin.com/company/park-indigo-group

corsalis

16, rue Dumont d'Urville
75116 Paris
www.corsalis.com

info@corsalis.com
+33 1 45 64 49 36

Follow us



QR code

